



Hawaii Medical Center East
 Continuing Medical Education
 2230 Liliha Street
 Honolulu, HI 96817

PRSRT STD
 US POSTAGE
 PAID
 HONOLULU, HI
 PERMIT NO. 787

4th Biennial

Becoming An

ETHICS CONSULTANT

An Intensive 4-Day Training Course
 for Healthcare Professionals

March 2-5, 2009
8:00 – 5:00 p.m.

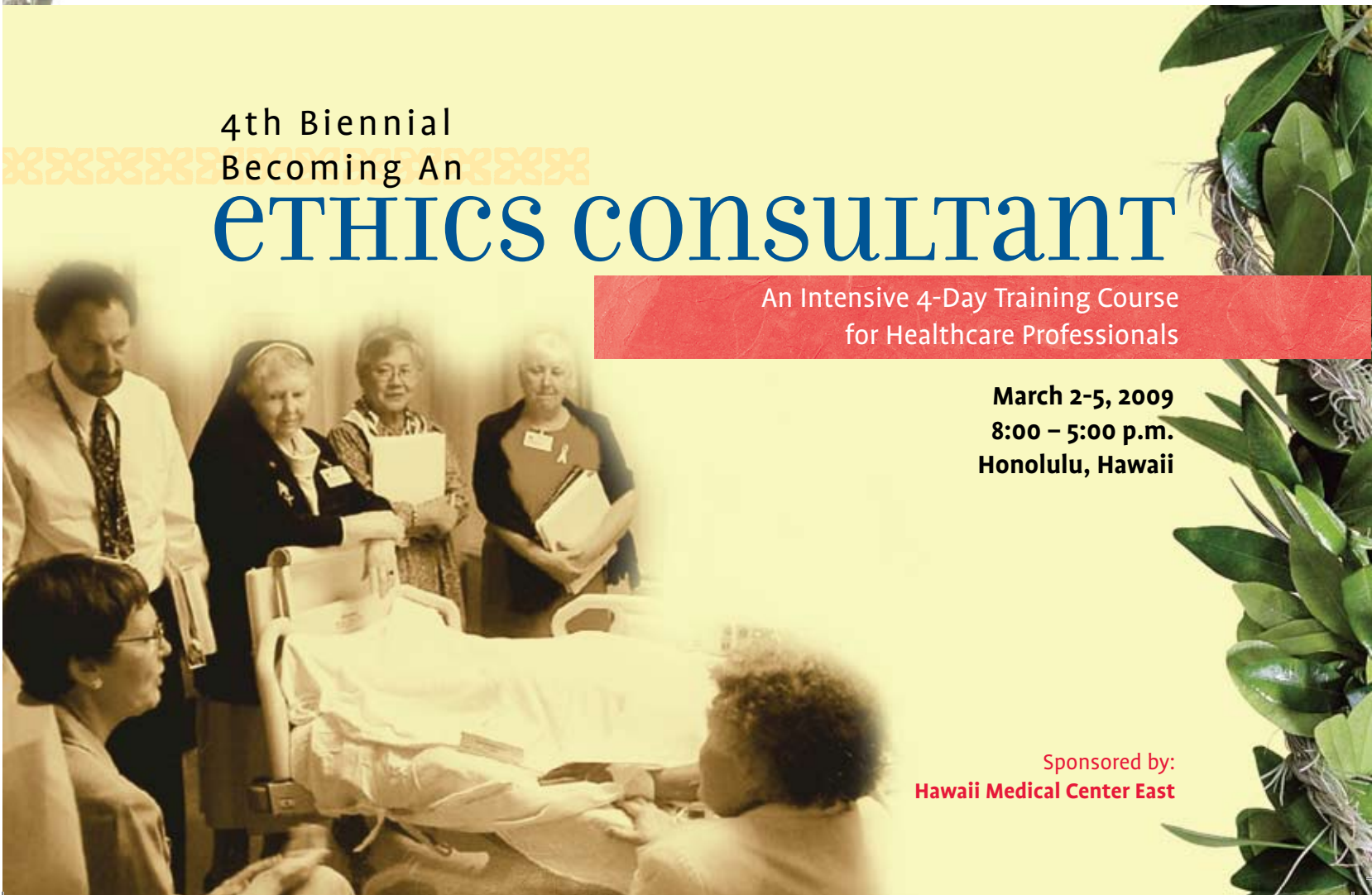
4th Biennial
 Becoming An

ETHICS CONSULTANT

An Intensive 4-Day Training Course
 for Healthcare Professionals

March 2-5, 2009
8:00 – 5:00 p.m.
Honolulu, Hawaii

Sponsored by:
Hawaii Medical Center East



Becoming an ETHICS CONSULTANT

ABOUT THE COURSE

This is a practical and interactive course designed for individuals who wish to become ethics consultants in the hospital setting. The program reviews the basic principles of clinical ethics and offers hands-on consultant training including:

- **Interviewing “patients and families”**
- **Consulting with healthcare professionals**
- **Writing ethics consultation reports**
- **Receiving individual feedback on written consultation reports**

The unique feature of this training course is the exposure to simulated patients/families and discussion with feedback from the faculty. We offer participants our combined experience of over 150 ethics consultations from the Ethics Center. Due to the intensity of the course and extensive hands-on training, registration is limited to 20. In addition to the valuable practical training, attendees will receive a resource packet of useful reference materials in law and ethics. A laptop computer is recommended to write the ethics consultation report.

Program

- Day 1** Overview of Medical Ethics; how to write the consultation report; 1st simulated case scenario dealing with advance directives/surrogate decision maker.
- Day 2** Law and Ethics; seminal legal cases; perspectives from a judge and defense attorney; 2nd simulated case scenario dealing with patient autonomy.
- Day 3** Medical Futility and Ethics; neonatal intensive care; do not attempt resuscitation orders; 3rd simulated case scenario dealing with medical futility.
- Day 4** Healthcare Economics and Ethics; panel discussion on artificial nutrition and hydration; selling of human organs.

Course will end with a review of a decade of ethics consultations at our institution and group discussion of ethics committees at your medical centers.

Course Objectives

- 1) Identify common ethical issues in a hospital setting.
- 2) Discuss the basic questions needed to analyze common bioethical dilemmas.
- 3) Demonstrate skills in information gathering.
- 4) Describe relevant facts and issues to an ethics committee and make specific recommendations.
- 5) Write an ethics consultation report for the patient’s medical record.

“The course was well planned and moved along well. The simulated families were excellent. It was as if the simulations were real. The course was well balanced and there was enough time for questions, and questions were answered thoroughly.”

Charles Lewis, MD
Assistant Vice President of Medical Affairs and
Ethics Committee Chairman
San Diego Hospice and Institute for Palliative Care

“Excellent teaching faculty, wide range of topics presented, very practical and applicable. Role-play is excellent. Enjoyable throughout.”

Lim Sok Bee, MBBS, M Med (Paeds)
Medical Ethics Committee Chairman
KK Women and Children’s Hospital, Singapore

Wonderful setting; distinguished and renowned faculty; Outstanding scenarios; very engaging discussions. The quality of the other participants was top notch.”

Bradley A. Chun, MD
Kokua Kalihi Valley, Honolulu, HI

“Excellent! Consistently exceeded my expectations. The example of an efficiently led, highly cohesive ethics training course. Valuable didactic and practical sessions.”

Mark Pian, MD
Cystic Fibrosis Center Director
Professor of Pediatric Pulmonology Training Program
UCSD School of Medicine
Rady Children’s Hospital, San Diego



An Intensive 4-Day Training Course

FACULTY

Ellen G. Carson, JD

Director, Alston, Hunt, Floyd, and Ing

Jing Jih Chin, MBBS

Adjunct Associate Professor of Medicine
National University of Singapore
Director, Singapore Medical Association
Centre for Medical Ethics & Professionalism

Bradley A. Chun, MD

Assistant Professor of Medicine
John A. Burns School of Medicine
University of Hawaii
HMC East Ethics Committee Member

Jennie Gamage, RN, CCRN

Patient/Family Care Manager
St. Francis Home Hospice Program
St. Francis Ethics Center Fellow
HMC East Ethics Committee Member

Susan M. Hashimoto, BA, SPHR

(Course Co-Director)
Projects Manager
St. Francis Healthcare System
St. Francis Ethics Center Fellow
HMC East Ethics Committee Member

Maria L. Kostylo, RN, BSN

Chief Nursing Officer
Hawaii Medical Center East
HMC East Ethics Committee Member

Daniel T. Murai, MD

Associate Professor of Medicine
Neonatal Division
John A. Burns School of Medicine
University of Hawaii
St. Francis Ethics Center Fellow

James H. Pietsch, JD

Professor of Law
William S. Richardson School of Law
Adjunct Professor of Geriatric Medicine
John A. Burns School of Medicine
University of Hawaii

Lawrence J. Schneiderman, MD

Professor Emeritus of Family and
Preventive Medicine
University of California, San Diego School
of Medicine

S.Y. Tan, MD, JD

(Course Director)
Professor of Medicine
John A. Burns School of Medicine
University of Hawaii
Director, The St. Francis International Center
for Healthcare Ethics

Michael A. Town, JD

Circuit Court Judge

The St. Francis International Center for Healthcare Ethics:

The St. Francis International Center for Healthcare Ethics, popularly known as the Ethics Center, is a component of the St. Francis Healthcare System of Hawaii. Its goal is to provide leadership in the Pan Pacific region regarding healthcare and organizational ethics.

The Ethics Center offers expertise and services in healthcare consultations, education, research, organizational ethics, and policy development. It provides a forum for scholarly dialogue and reflection on healthcare ethics and related issues for the Catholic community and community at large. The Ethics Center interacts actively with local, national, and international centers of bioethics. Its library of texts, journals, and video and audio tapes provides basic information for the study of contemporary and transcultural ethical issues.

The Ethics Center provides ethics consultation services to Hawaii Medical Center (East and West), Liberty Dialysis-Hawaii, and St. Francis Community Health Services. It appoints Fellows who serve for two years. Fellows meet monthly to review and debate the latest literature in healthcare ethics and related issues, and undertakes scholarly work, presentations, and teaching duties.

Other programs of the Ethics Center include: CME Ethics seminars, a two-day biennial International Bioethics Conference, and Sabbatical Program.

CONFERENCE INFORMATION

Fees and Registration

The tuition for this course is \$975 for Early Bird registration by February 2, 2009. General Registration is \$1250 by February 27. Register online at www.stfrancishawaii.org and link to the training course. Confirmation will be sent within 10 working days of receipt of registration materials. You may

contact Katherine Korenaga at (808) 547-6050, fax (808) 547-6049, or by email kkorenaga@hawaiiimedcn.com for verification. Registration fee includes all course materials, lectures, training sessions, continental breakfast, lunch, refreshments, parking, graduation ceremony, and certificate.

Continuing Education Credits

For Physicians:

The Hawaii Medical Center East is accredited by the Hawaii Medical Association to provide continuing medical education for physicians.

The Hawaii Medical Center East designates this educational activity for a maximum of 28 AMA PRA Category 1 Credits™. Physicians should only claim credit commensurate with the extent of their participation in the activity.

For Nurses:

The Hawaii Medical Center East is approved to provide continuing education by the Hawaii Nurses Association Continuing Education Committee appointed by the Hawaii Nurses Association Board of Directors as approvers of continuing education in nursing. Code #2008-002, 28 contact hours.

Visit our website at www.stfrancishawaii.org and click on International Center for Healthcare Ethics under *Programs and Services*.





4th Biennial
Becoming An
ETHICS CONSULTANT

Training Course 2009

REGISTRATION FORM

First Name Last Name Degree (MD, PhD, RN, etc.)

Address

City, State, Zip, Country

Business Telephone Fax Number Email Address

Affiliation (University/Hospital/Organization, etc.)

PAYMENT METHOD

- A check for \$975 is enclosed. Please make check payable to: Hawaii Medical Center East
- A check for \$1250 is enclosed. Payment made after February 2, 2009.

Charge my: Visa MasterCard Total Payment \$ _____

Cardholder's Name

Cardholder's Mailing Address (if different from above)

Card Number Expiration Date

Authorized Signature 3-digit code on back of card

Register online or send completed registration form and payment to:

**Hawaii Medical Center East
CME Coordinator
2230 Liliha Street
Honolulu, HI 96817**

**Phone: (808) 547-6050
Fax: (808) 547-6049**

Fees and Registration

The tuition for this course is \$975 for Early Bird registration by February 2, 2009. General Registration is \$1250 by February 27. Register online at www.stfrancishawaii.org and link to the training course. Confirmation will be sent within 10 working days of receipt of registration materials. You may contact Katherine Korenaga at (808) 547-6050, fax (808) 547-6049, or by email kkorenaga@hawaiiimedcen.com for verification. Registration fee includes all course materials, lectures, training sessions, continental breakfast, lunch, refreshments, parking, graduation ceremony, and certificate.

Special Needs

The Hawaii Medical Center East is ADA compliant. If you have any special needs (including dietary needs), please contact Katherine Korenaga at (808) 547-6050 by February 16, 2009.

Our Website

Visit www.stfrancishawaii.org and click on International Center for Healthcare Ethics under Programs and Services to register online and receive information about hotel accommodations.

Hawaii Medical Center East reserves the right to cancel or reschedule programs and to change faculty or contents of program due to unforeseen circumstances. It is not responsible for any airfare, hotel, or other costs you incur. Registration fee, less a 10% service fee, is refundable if written notice is received five working days prior to the start of the training session. Refunds will be issued after the course is concluded.